



Fiscal Year
2023

Annual Report

Louisiana Prison Museum & Cultural Center

operated by the

Louisiana State Penitentiary Museum Foundation, Inc.

17544 Tunica Trace, PO Box 1, Angola, LA 70712.

Summary of Louisiana State Penitentiary Museum Foundation Annual Report 2023

This summary captures the highlights of the annual report for the Louisiana Prison Museum & Cultural Center (LPMCC). The report reflects the museum's performance in the fiscal year 2023, detailing its mission, goals, values, strategic priorities, financial performance, and future plans.

- The LPMCC expanded its mission to provide visitors with a cultural experience, sparking dialogue about corrections and justice in Louisiana.
- There was a significant increase in visitors post-pandemic, and unique fundraising opportunities were restored.
- The most popular exhibit was "The Cell," a replica of a real cell in the maximum-security prison, complemented by exhibits revealing rehabilitative programs and organizations.
- Plans for the coming year include launching an educational program teaching students about the history of prisons in Louisiana and the complex issues surrounding incarceration.
- The mission of the LPMCC is to captivate visitors with stories of correction and justice in Louisiana. Goals include preserving history, providing engaging experiences, humanizing stories, and learning from the past.
- Values of the LPMCC include integrity, openness and inclusiveness, excellence, learning, and innovation.
- Strategic priorities include sustainability, development, funding, recruitment/retention of an inclusive board, increasing educational opportunities, enhancing volunteer opportunities, and facility upgrades.
- Key financial outcomes include \$25K in grants, a 12% increase in gross profit over FY 2022, and a significant increase in board diversity.
- Future steps include expanding programming, increasing revenue, and building partnerships.

Table of Contents

04 — From the President

05 — Mission

06 — Goals

07 — Values

08 — Strategic Priorities

09 — Finances

12 — Next Steps

13 — Highlights

Annual Report of the Louisiana Prison Museum & Cultural Center for FY 2023

Dear Friends,

I am thrilled to present the annual report of the Louisiana Prison Museum & Cultural Center for the fiscal year 2023. In January, the board of directors expanded the museum's mission to provide visitors with a cultural experience that includes dialogue about corrections and justice in Louisiana.

Despite the pandemic, this year has been exceptional for the museum. We have experienced a significant increase in visitors, and have successfully restored fundraising opportunities that are integral to our operations. We are in the planning stages for relocating to the museum's new site on prison property, at the location of the old Tunica School.

Our most popular exhibit this year was "The Cell," a replica of a real cell in the maximum-security prison. While it tells the story of prison life, a glance out of the bars will reveal positive rehabilitative programs and organizations available to participants. Our "Organizations" and "The Hobbycrafts" exhibits are a reminder of the resilience of the human spirit and the opportunities for second chances.

In the coming year, we plan to launch a new educational program that will provide students with insight into Louisiana's prison history, as well as the complex issues surrounding incarceration. We believe it is essential for young people to understand the criminal justice system and its impact on society.

As we look forward to the future, we are excited to continue our work to educate and inspire the public. We are committed to expanding our programming and making the museum accessible to everyone.

Thank you for your continued support.

Sincerely,

Jesse L. Perkins

President, Board of Directors

Louisiana State Penitentiary Museum Foundation, Inc.

d/b/a Louisiana Prison Museum & Cultural Center

Our Mission

Our mission is to captivate visitors with a cultural experience that includes dialogue about the complex and compelling stories of correction and justice in Louisiana.



Our goals



01

Document and preserve by sharing the history and development of corrections and justice in Louisiana.



02

Provide engaging learning experiences through meaningful and interactive exhibits and programs.



03

Humanize the stories of individuals navigating the criminal justice system by becoming a prominent voice for the incarcerated, corrections professionals, victims/survivors, families and communities in the national conversation about social and criminal justice.



04

Learn from the past by displaying perspective not only about prison life, but the local culture and its significance in the development of corrections in Louisiana.

In its 2021-2024 Strategic Plan, the Foundation laid out its values:

Integrity:

The LSP Museum Foundation Board and Museum Staff value honesty and ethical practices and behavior. We are accountable for our decisions and actions.

Openness and Inclusiveness:

We are committed to transparency in our operations; we are open to ideas, information and knowledge; and we communicate truthfully with the public and our stakeholders regarding our efforts and activities. We are generous with access to our programs and resources. We encourage a diversity of people from different racial and ethnic backgrounds and cultures to visit our museum.

Excellence:

We value quality in everything we do and how we do it. It is our responsibility to preserve the cultural heritage, discoveries, and stories for future generations. This requires adherence to the highest ethical standards and practices that preserve our history and maintain the public's trust in our activities and operations.

Learning:

We are committed to investing in the education of our board members and museum staff, and in the community.

Innovation:

We envision what might be and encourage creativity in the pursuit of our mission.



Strategic Priorities

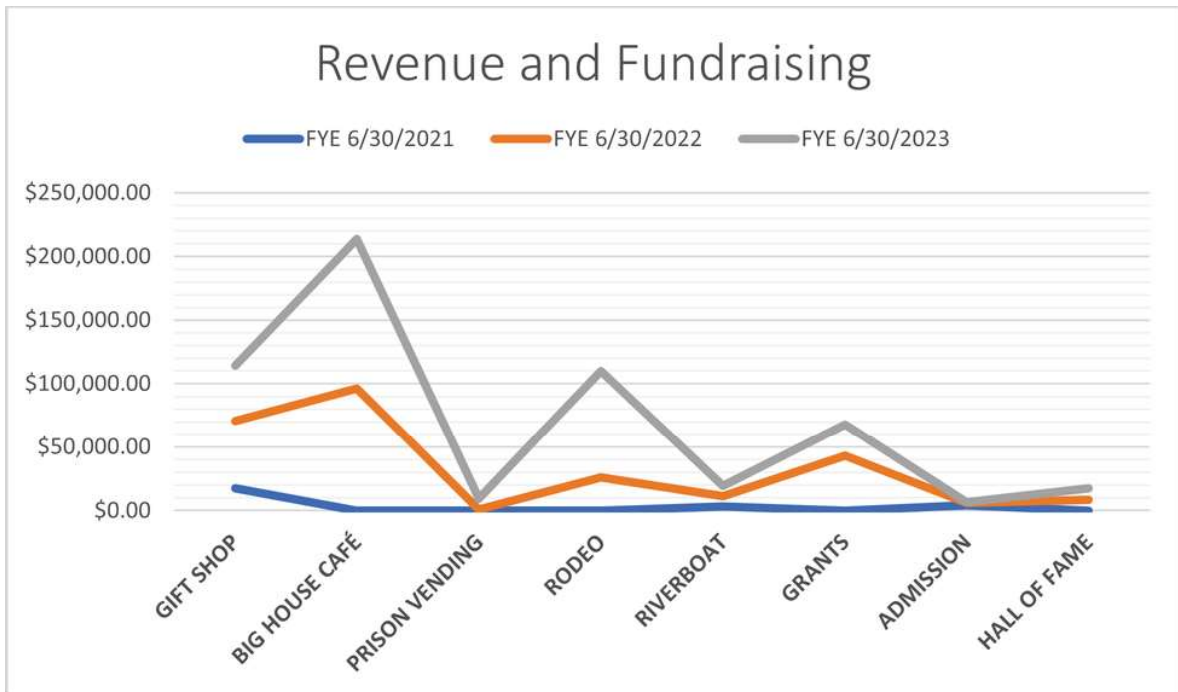


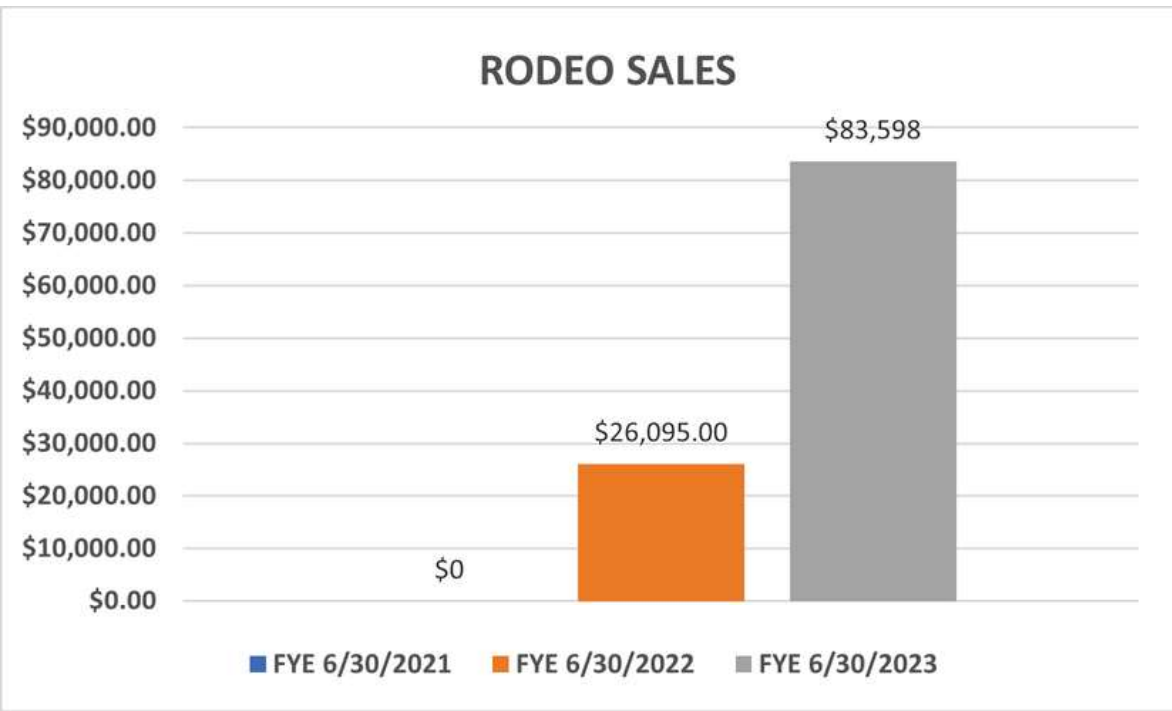
Key Indicator	Activity / Project	FYE 2023 Data / Outcome
Sustainability, Development, Funding	Grants Donations Fundraisers	<ul style="list-style-type: none">• \$25K grants• 12% increase gross profit over FY 2022
Recruitment/Retention of Inclusive, Trained Board	Diversity of board Board training Policy review	<ul style="list-style-type: none">• Female board members increased by 56% over FY 2021• African American board members increased 58%• Policy review is on each board meeting agenda
Increase educational opportunities, enhance visitor experience	Seminars, conferences Symposium Visitors	<ul style="list-style-type: none">• LA Tourism & Byways annual conference• Symposium - 100 attendees• Rotary Club presentation 11/2022• 80% increase in website traffic
Enhance Volunteer Opportunities	Rodeo volunteers Social media	<ul style="list-style-type: none">• Over 400 manhours donated by board members• Prison staff volunteers at rodeo
Facility Upgrade	Tunica School Project	<ul style="list-style-type: none">• 4 planning meetings• Planning is ongoing• Architectural drawings are in progress

Financial Overview

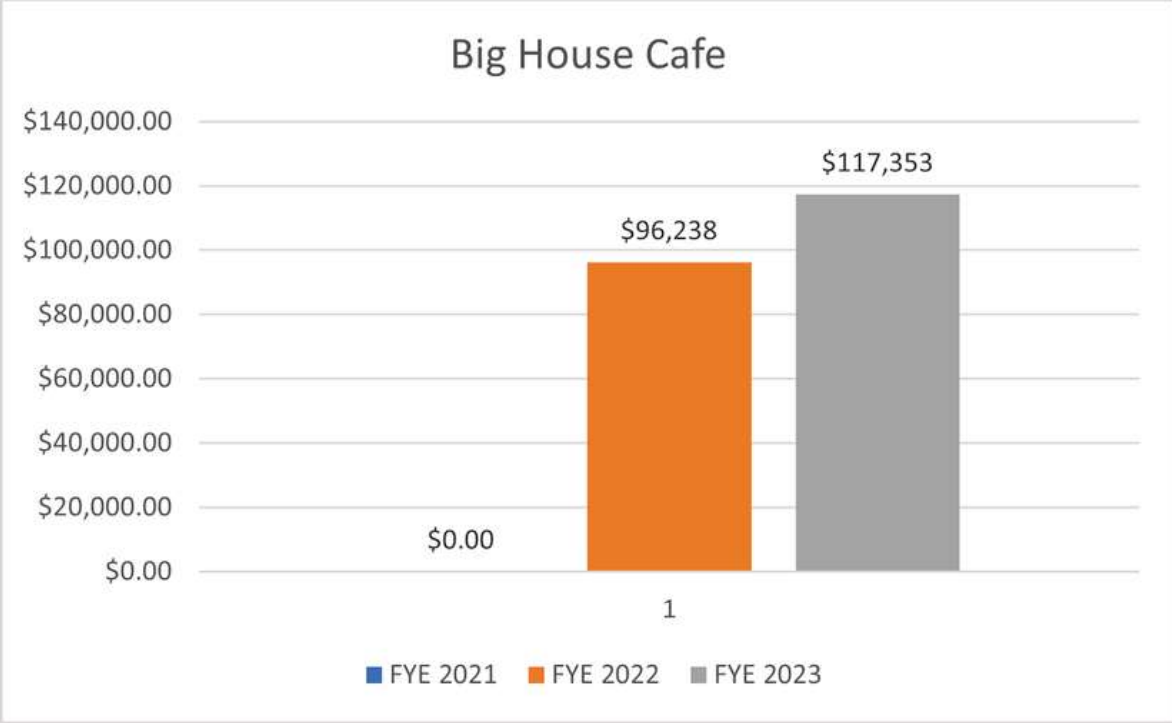
Positive Financial Progress for the Foundation Post-Pandemic

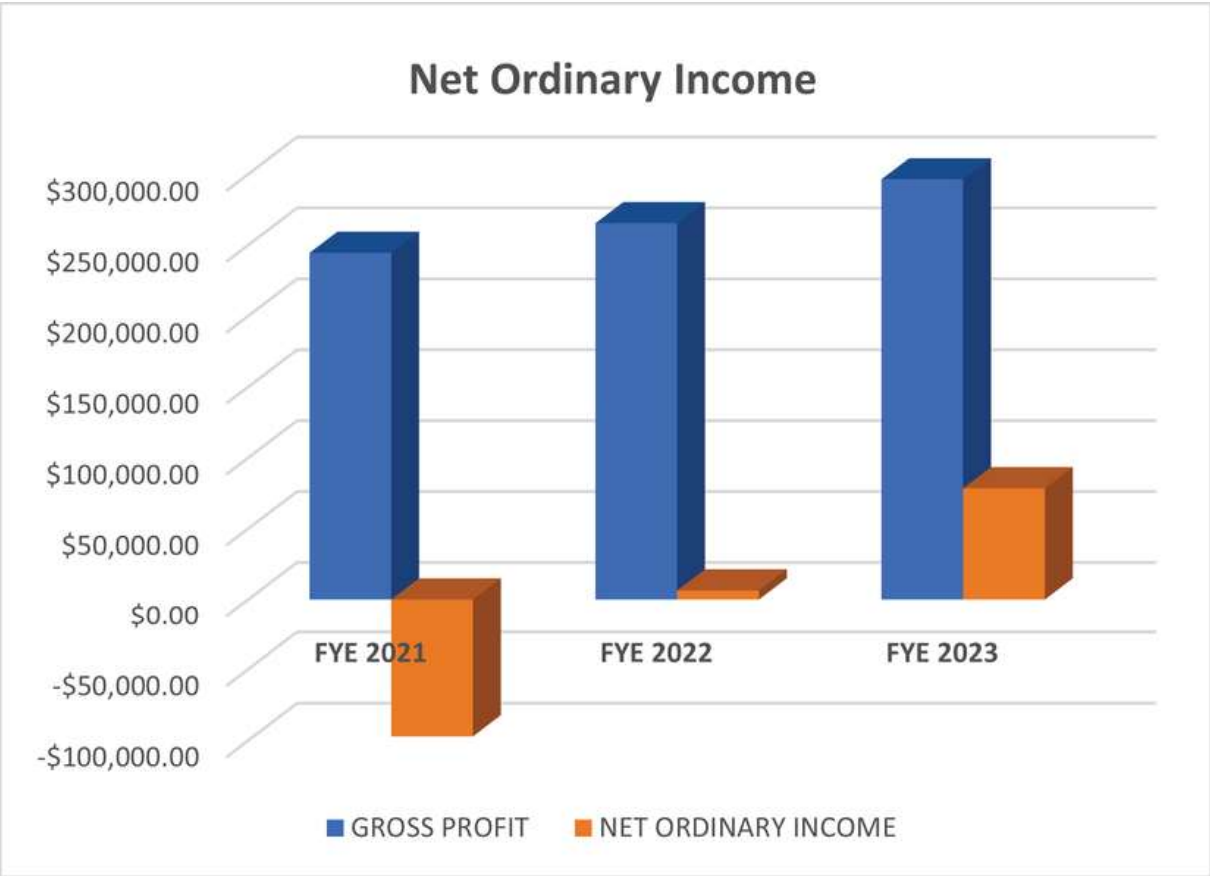
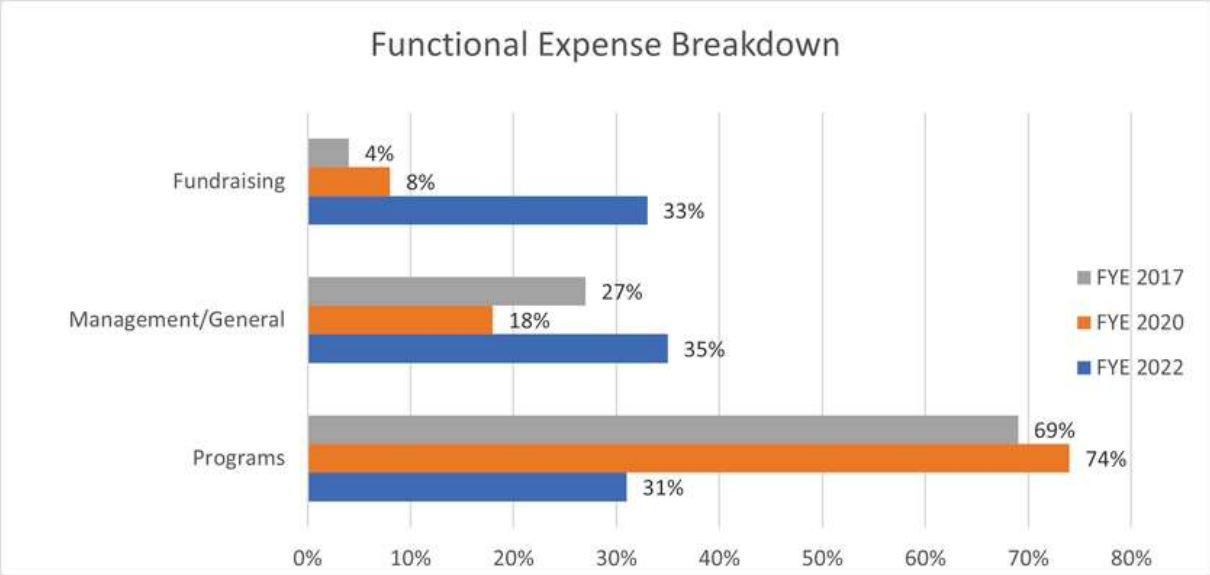
The Foundation is continuing its financial recovery since the pandemic, and we're pleased to share the sources of funding over the past three years in the charts below. The graphics are self-explanatory and show promising results.





There was no rodeo in FYE 2021 (Covid)





The Louisiana State Penitentiary Museum Foundation, Inc. has made its federal tax returns available for public inspection on their website: www.angolamuseum.org.

Next Steps

What's the next step in our journey?

As a dynamic and evolving entity, the Foundation and Museum consistently endeavors to enhance its offerings. This annual report serves as a tool to monitor progress and achievements over time. The following segment delineates the plan for the upcoming year, ensuring the continuation of our commendable efforts.



01. Expand programming

- Develop middle and high school curriculum to guide school tours of prison and museum, before and after tours, a teaching tool which can stand alone.
- Develop existing library of oral histories

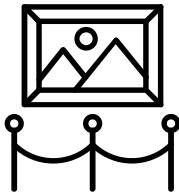
IMPACT: Humanize the story being told



02. Increase revenue

- Actively promote Hall of Fame event (sponsorships and silent auction)
- Participate in fairs - pop-up exhibits

IMPACT: Allow for hiring one additional staff



03. Preserve collections

- Organize and catalogue all collections
- Preserve the collections based on professional standards.
- Digitization

IMPACT: Broadening public access



04. Build partnerships

- Be active and visible in local community
- Build/expand a volunteer pool

IMPACT: Sustainability

Interesting Highlights

- The mission of the foundation was revised in January 2023 to expand its reach to include the history of all Louisiana corrections as well as the culture of the local community.
- The museum has begun the process of re-branding, in connection with the expanded mission.
- Key staff and board members met with representatives from the Lt. Governor's office to get input and ideas on how to further development the "story" being told in the museum and, in particular to prepare for the move to the Tunica School location.
- Members of the Tunica Tribe met with officers of the foundation and have expressed their interest in incorporating the history of the Tunica into the story presented by the museum.
- The virtual symposium, "In Pursuit of Equal Justice" was launched on the museum's YouTube channel. The radio station, KLSP, at the state penitentiary broadcast the symposium to the inmate population.
- Dr. Marianne Fisher-Giorlando, Education Committee Chair, researches and fills a variety of patrons' requests based upon the museum's unique collections for the following:
 - History of Angola's Music, Dr. Benjamin Harber
 - Delia Swift aka Bridget Fury, 1850s Penitentiary, for author Dennis Whitehead
 - Decline of Clemency in Louisiana and Mississippi, for Dr. Reiko Hillyer (photo choices for the book)
 - Clementine Barnabet, for Dr. Lauren Henley
 - Photos of women in early LSP, for Nathalie Christiane's dissertation
 - Silas J. Corley and Lou Curt Hughes, for Richard Hughes
 - J.C. Standford Williams, for Tracy Rice
 - Quilt Making at Angola, for Tamara Santibanez
 - History of Executions in Louisiana from Chaplain Henry John's collections, Daniele Hearn, Thaddeus Moore, George Young
- In partnership with the University of Louisiana at Lafayette, the museum provided images for uploaded at the Louisiana Digital Library (<https://louisianadigitallibrary.org/islandora/object/ull-lsp%3Acollection>). Identification of these images in ongoing.
- LEH awarded the museum a \$5,000 grant for emergency recovery. This funding will help offset the cost of a standby generator for the new museum location. In addition LEH awarded \$10,000 in Culture Cares funding for general operational costs.
- Mr. Lane Grigsby, Founder and Chairmen Emeritus/Cajun Industries, donated \$10,000 to the museum for the development of a middle and high school curriculum in conjunction with the West Feliciana Parish School system. The curriculum will be used to guide school tours to the prison and museum, both before and after the tours. The curriculum will also be a stand alone teaching tool. Completion of the development is expected during FY 2024.

Acknowledgements

The Board's executive committee is responsible for overseeing day-to-day operations of the museum and seeing to it that it meets its goals. The committee is made up of volunteers who are passionate about the museum and its mission.

Special acknowledgement to the Foundation's Executive Committee members for their work in FY 2023:

JESSE L. PERKINS, President of the Board of Directors
Retired West Feliciana Parish School System

PERRY STAGG, 1st Vice-President
Investigator, LA Department of Corrections

GARY YOUNG, 2nd Vice-President
Consultant, Wilkinson County Correctional Center

CATHY FONTENOT, Secretary
Consultant, Mississippi Department of Corrections

BRIAN GREMILLION, Treasurer
Administrative Director, LA State Penitentiary

DR. MARIANNE FISHER-GIORLANDO, Chairman, Education Committee
Professor Emerita, Grambling State University

Our volunteer board members with their diverse expertise have provided invaluable guidance and oversight:

FRANCIS ABBOTT
Executive Director, LA Pardon/Parole Board

ERIC LANE
President, Gerry Lane Enterprises

ROCHELLE AMBEAU
Deputy Warden, LA State Penitentiary

AMANDA MOORER
Academic Dean, EBR Parish Schools

ANNE-MARIE EASLEY
Assistant Warden, LA State Penitentiary

C. B. OWEN
Retired VP and Chief Technology Officer, USG Group

NORRIS HENDERSON
Founder, Voice of the Experienced (VOTE)

FRANKIE STEED-PIERSON
Commissioner, MS River Parkway Commission

TODD HERNANDEZ
Attorney at Law

SHERYL RANATZA
Chairman, LA Board of Pardon/Parole Board

TIM HOOPER
Warden, LA State Penitentiary

ROBERT TOBUREN
Professor Emeritus, LA Tech University

RONNIE JETT
Retired Deputy Warden, LA State Penitentiary

DYVAR ANDERSON-WRIGHT
Info Technology Director, W/ Feliciana Parish

Our dedicated staff, the heart and soul of our museum, has worked tirelessly to bring our exhibitions, educational programs, and community outreach efforts to life. THANK YOU!

KATHRYN LOECHELT, Museum Director

ROLANDA ROBINSON, Administrative Assistant/Operations

TRIKINA ROACH, Security, Operations Manager/Big House Café

Contact us

Kathryn Loechelt
Museum Director
225-655-2592

www.angolamuseum.org
angolamuseum@angolamuseum.org